

Dual Channel Audiometry  
**AVANT  
A2D<sup>+</sup>**

Welcome to the  
New Generation



**Now**  
With Automatic  
Driver  
Installation!

***No Longer USB port specific!***  
***No more plugging and unplugging of headsets!***

Now, the AVANT™ A2D<sup>+</sup> is truly plug and play. No need to load separate drivers during the initial device installation. Simply install the operating software, plug the device into any USB 2.0 port of your computer and you are ready to test. No longer USB port specific!

The computer will recognize the audiometer immediately, making the installation process even faster and easier.

- Dual Channel Audiometer
- Air, Bone & Speech Functions
- Powerful 3rd Party Counseling tools
- Optional Integrated Quick SIN™
- Optional Automated Audiometry
- Compact Design Approx. 5" x 6.5"
- PC Based via USB Connection
- Runs within NOAH™ or Stand Alone

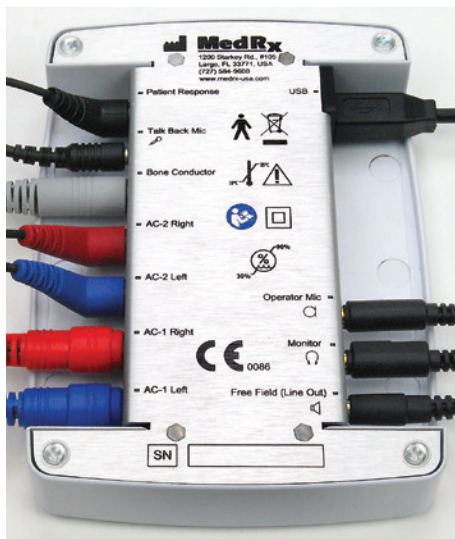
AVANT™ A2D<sup>+</sup>

**Air, Bone, Speech and Masking System**

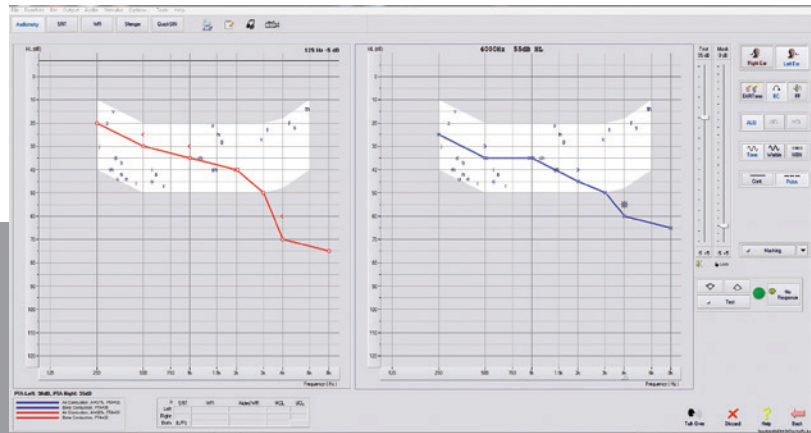
**AVANT  
A2D<sup>+</sup>**

The new design provides dual air conduction ports, allowing two separate headsets to be plugged in simultaneously.

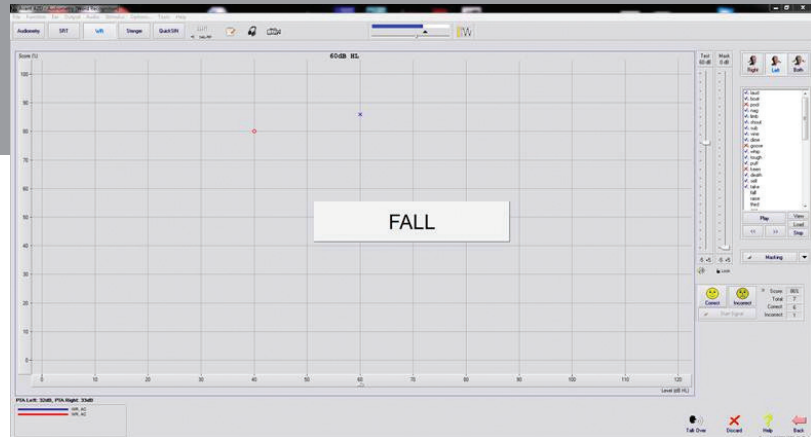
No more inconvenient plugging and unplugging of headsets.



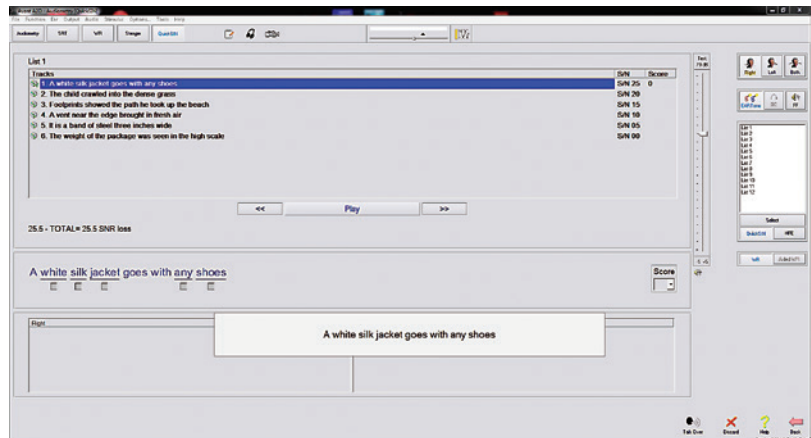
Underside of the unit



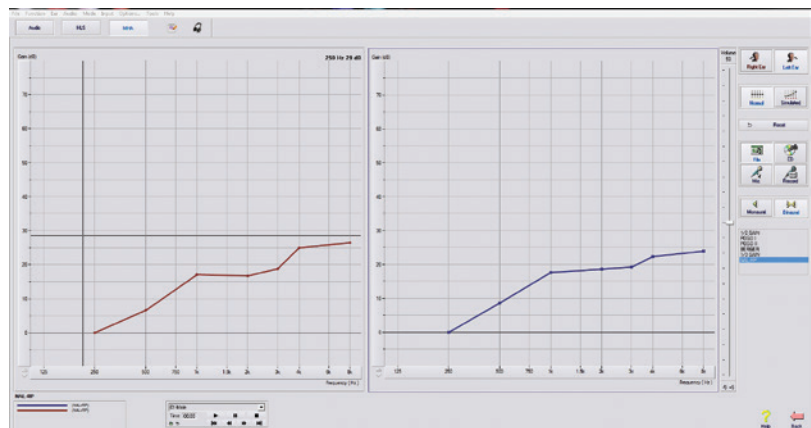
AVANT A2D<sup>+</sup> – Audiometry



AVANT A2D<sup>+</sup> – Speech Audiometry



AVANT A2D<sup>+</sup> – QuickSIN™



AVANT A2D<sup>+</sup> – MHA Master Hearing Aid

# Compact, Portable, Powerful, PC-Based



**Dual Channel  
Audiometry**

**AVANT  
A2D<sup>+</sup>**

Your customers really understand when they see the results

## **Diagnostic Audiometer**

The AVANT A2D<sup>+</sup> Audiometer represents a new era of ultra-compact diagnostic audiometry for your office. Compact yet rugged, this PC-based system is USB powered and supports current ANSI and IEC audiometric tests.

## **Available Tests**

The AVANT A2D<sup>+</sup> is a compact and powerful dual channel, air, bone and speech audiometer. It offers pure tone audiometry via earphones or bone conduction, masking and speech audiometry with SRT (Speech Recognition Threshold) and WR (Word Recognition). Additional features are HLS (Hearing Loss Simulator) and MHA (Master Hearing Aid). QuickSIN™ testing and automated audiometry are optional.

## **Counseling Tools (HLS/MHA)**

The Hearing Loss Simulator demonstrates the effect of the client's hearing loss for the spouse or family member. The program attenuates an input signal to simulate the severity of the loss for the third party.

The Master Hearing Aid Simulator demonstrates the benefits of amplification of a hearing aid to an inexperienced user.

Using these tools can empower the patient and third party to make informed decisions about their healthcare.

## **Audiometer Software**

The AVANT A2D<sup>+</sup> audiometer software can run stand-alone or from within NOAH™. It offers an intuitive user interface for data collection, patient monitoring and counseling. Several options are available which allow the user to customize the AVANT A2D<sup>+</sup> software to meet their needs.

## **The Ultimate Office<sup>+</sup> Package**

Get the AVANT A2D<sup>+</sup> Dual Channel audiometer and the AVANT REM Speech+ Live Speech Mapping system along with a convenient carrying case. Together they make up the complete audiological testing and fitting system.



Online live interactive training



The software has excellent counseling tools



The Ultimate Office<sup>+</sup>

**MedRx, Inc**  
 1200 Starkey Rd., Suite 105,  
 Largo, FL 33771  
 727-584-9600  
 Toll Free: 888-392-1234  
 Fax: 727-584-9602  
 Email: sales@medrx-usa.com  
 Web: www.medrx-usa.com

# Welcome to the New Generation

## Specifications

# AVANT A2D<sup>+</sup>

## About MedRx

MedRx, Inc. is a U.S. based global manufacturer and innovator of advanced computerized diagnostic and hearing instrument fitting technologies, specifically designed for the hearing care professional.

MedRx has created a remarkable New Generation of discreet, yet powerful PC-based instrumentation for Audiometry, Real Ear Measurement, Live Speech Mapping, Hearing Instrument Testing & Evaluation and Video Otoscopy.

## Standard Accessories

- Insert Earphones, TDH 39 or DD45 Headphones
- Bone Conductor
- Operator Mic / Monitor Headset
- Patient Response Switch
- Talkback Microphone
- Auditec Sound File License
- USB Cable, Software & Manuals
- Carrying Case

## Minimum Computer Requirements

- Windows®-PC compatible computer
- Intel™ Dual Core, 1.8 GHz or better
- 2 GB RAM, 5 GB free hard drive space
- Available 2.0 USB ports (2)
- CD-ROM or DVD-ROM drive
- Windows 7 or 8 Professional (32 or 64-bit)

## Technical Specifications

Standards:	ANSI S3.6-2010, Type 2 AE (IEC 60645-1&2) Tone Audiometry, Speech Audiometry	Minimum / Maximum Output:	-10 dB To 120 dB HL At 1 KHz – Air (¼ Inch Mono Jacks), -10 dB To 75 dB HL At 1 KHz – Bone (¼ Inch Mono Jack)
Channels:	Two	Free Field Output:	Frequency Range 125 Hz - 8000 Hz, Dynamic Range 60-90+ dB SPL At 1 Meter Distance, (Using 50 Watt Stereo Amplifier With 89 dB Sensitivity Speakers)
Outputs:	Insert Earphones or TDH 39 Headphones (DD45). B71 Bone Conductor, Free Field - Line Level Output	Speech Input:	Microphone (3.5 mm Stereo Jacks)
Tone Stimuli:	Pure Tone, Warble Tone, Continuous Or Pulsed. Warble Modulation Frequency And Pulse Period Are User Adjustable.	I/O Jacks - 3.5mm:	Operator Headphones (Output), Operator Talk Forward Microphone, Patient Talk Back Microphone, Free Field (Line Out)
Masking Signals:	Tone Audiometry: Narrow Band Noise (Default), Speech Weighted Noise, White Noise. Speech Audiometry: Speech Weighted Noise (Default), White Noise, External Recorded (Opposite Channel).	I/O Jacks - 1/4":	Left Air Conduction (2) Right Air Conduction (2) Bone Conduction Patient Response Switch
Frequency Range	Air: 125 Hz - 8000 Hz, Bone: 250 Hz - 8000 Hz, Sound Field: 125 Hz - 8000 Hz (Line Level)	Communication Port:	USB (Provides All Device Power)
USB Power Only:		Power Requirements:	USB Power +5 Volts DC, Less Than 500mA
Acoustic Distortion:	< 1.0% At 500 Hz, 100dB SPL	Dimensions:	Approx 6.5" x 5" x 1.25" (L x W x H), Approx. 16.51 cm x 12.7 cm x 3.2 cm (L x W x H)
Noise Floor:	< -10dB HL From 125 Hz-8000 Hz	Weight:	< 1 lb, < 500 g
Attenuation:	1dB Or 5dB Steps, User Selectable		

