

GSI-AMTAS



USER MANUAL



Part NumberD-0113317 Rev. B

Setting The Clinical Standard

www.grason-stadler.com

Grason-Stadler, 10395 West 70th Street, Eden Prairie, Minnesota 55344
800-700-2282 • 952-278-4402 • fax 952-278-4401 • e-mail info@grason-stadler.com



Title: GSI-AMTAS™ User Manual

Manufacturer

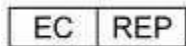
Grason-Stadler, Inc.
10395 West 70th Street
Eden Prairie, MN 55344
USA

Copyright © 2016 Grason-Stadler. All rights reserved. No part of this publication may be reproduced or transmitted in any form or by any means without the prior written permission of Grason-Stadler. The information in this publication is proprietary to Grason-Stadler.

This product incorporates software developed by others and redistributed according to license agreements. Copyright notices and licenses for these external libraries are provided in a supplementary document that is included with the other software applications distributed with this product.

Compliance

The CE 0086 mark identifies compliance with the Medical Device Directive 93/42/EEC. Grason-Stadler is an ISO 13485 certified corporation.



European Authority Representative
Grason-Stadler
c/o Interacoustics A/S
Audiometer Alle 1
5500 Middelfart
Denmark



Caution: US Federal law restricts this device to sale by or on the order of a physician or licensed hearing care professional.

Table of Contents

| | |
|---------------------------------------------------------|----|
| Preface | 5 |
| Manual Conventions | 5 |
| Important Safety Instructions..... | 5 |
| Precautions..... | 5 |
| Introduction..... | 7 |
| Indication for Use of GSI-AMTAS | 7 |
| Intended Use of GSI-AMTAS | 7 |
| Installation and Setup..... | 8 |
| Precautions..... | 8 |
| Prerequisites..... | 8 |
| Installing on Windows® 7 and 10 | 9 |
| Uninstalling GSI AMTAS | 11 |
| Connecting GSI Instruments..... | 11 |
| GSI-AMTAS License | 11 |
| Connecting the GSI Audiometer to the GSI-AMTAS PC | 11 |
| Patient Preparation..... | 12 |
| Bone Oscillator Placement..... | 12 |
| Headphone Placement..... | 12 |
| GSI-AMTAS Program..... | 13 |
| User Interface – Screen Layout and Controls | 14 |
| Opening Screen..... | 14 |
| Patient Information Screen | 15 |
| Listen for a Tone Screen..... | 16 |
| Response to a Tone Screen | 17 |
| Listen for a Word Screen | 18 |
| Response to a Word Screen | 19 |
| Test Completed Screen | 20 |
| Settings and GSI-AMTAS Config App | 21 |
| Test Options | 23 |
| General Options | 27 |
| Menu Bar | 28 |
| GSI-AMTAS Reports | 32 |
| Audiometric Report | 32 |
| Patient Report..... | 36 |

Uploading GSI-AMTAS Results to GSI Suite 37

Error Messages..... 38

 Your response was not detected. You may have taken too long or did not tap on a button. 38

 You did not respond within the time limit. Press the button below to conclude the test. 38

 Domain not found. Try using a local account to complete login. Contact network administrator for Domain assistance..... 38

 The username or password was incorrect. 38

GSI-AMTAS Testing Protocol 39

 Psychophysical Method 39

 Masking 39

 Speech..... 39

 Pure Tone Average Calculation 40

 Non Responses..... 40

Config App Default Settings..... 41

AMTAS Publications and Patents..... 42

 AMTAS PUBLICATIONS..... 42

 AMTAS PATENTS 42

Preface

This user manual provides information about the GSI-AMTAS software program. This manual is intended for technically qualified personnel.

Please note: This operating manual is not intended as a training manual for audiometry. The reader should consult standard audiology texts for the theory and application of the auditory tests provided by this software when connected to an instrument.

Manual Conventions



In this manual the following label identifies conditions or practices that may present danger to the patient and/or user or damage to the equipment.

Important Safety Instructions



The software program configuration and audiometer must be used only by practitioners qualified to perform audiometric tests. It is intended for transient use as a screening and diagnostic tool; however no surgical or medical procedure should be undertaken solely on the basis of results obtained from the program.

Consult the audiometer manual for the important safety information regarding the audiometer. Ensure that all transducers are properly connected to the audiometer. Do not connect the transducers to the audiometer while attached to the patient.






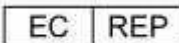






Consult the PC manual for the PC for the important safety information for the PC.

Precautions

READ THIS OPERATING MANUAL BEFORE ATTEMPTING TO USE THE SOFTWARE

This software configuration and audiometer should only be used by a hearing health care professional such as an audiologist, otolaryngologist, researcher or a technician under the direct supervision by the aforementioned specialist. Users should use their professional skills when interpreting the results and this should be done in conjunction with other testing as deemed appropriate given their professional skills. Appropriate placement of the transducers on the patient is required for accurate test results. Patient discomfort could lead to confusing results from the patient. Incorrect use could lead to wrong results.

Regulatory Symbols

| Symbol | IEC Pub. | Description |
|-------------------------------------------------------------------------------------|---------------|------------------------------------------------------------------------------------------------------------------------------------------------------------------------------------------------------------------------------------------------------|
|  | 980 & 60601-1 | Conforms to European Medical Device Directive 93/94/EEC. |
|  | 980 & 60601-1 | Symbol for "SERIAL NUMBER." |
|  | 980 | GSI Part Number. |
|  | 980 & 60601-1 | Return to Authorized Representative, Special disposal required. |
|  | 980 & 60601-1 | Medical Equipment Classified by Intertek Testing Services NA Inc. with respect to electric shock, fire, and mechanical hazards only, in accordance with UL 60601-1. Classified under the Medical Device Directive (93/42/EEC) as a Class IIb device. |
|  | 980 & 60601-1 | Symbol for "European Representative." |
|  | 980 & 60601-1 | Symbol for "Manufacturer." |
|  | 980 & 60601-1 | Symbol for "Date of Manufacture." |
|  | 980 & 60601-1 | Attention, consult accompanying documents. |
|  | 60601-1 | B Patient Applied Part according to IEC 60601-1. |
|  | 980 & 60601-1 | Consult Operating Instructions. |
|  | ISO 7010-M002 | Follow Instructions for Use. |

Introduction

GSI-AMTAS is a software program that provides an automated method for obtaining a diagnostic hearing test including air and bone conduction thresholds with masking applied to the non-test ear. GSI-AMTAS also provides automated tests of speech reception. Both Speech Recognition Threshold (SRT) and Word Recognition Scores (WRS) may be obtained.

AMTAS was developed through a partnership between Audiology Incorporated and three research institutions, the University of Minnesota, the University of Utah, and the James H. Quillen Veterans Administration Medical Center. The development was funded by the National Institutes of Health Small Business Technology Transfer (STTR) Program.

GSI-AMTAS is based on a psychophysical procedure that uses the patient's responses to determine signal levels needed to find auditory thresholds. Once the transducers are placed on the patient, the test is self-administered. The test is self-paced so that patients proceed at the rate that is comfortable for them. Feedback is provided to the patient that helps them distinguish between test tones and other auditory sensations. GSI-AMTAS was designed to provide the same test results that would be obtained by an expert audiologist with a psychophysical procedure that has advantages over the commonly used clinical ("Hughson-Westlake") method.

Quality indicators provide information about the validity of results. Air conduction audiograms are classified based on configuration, severity, and symmetry. The program generates a report and interfaces with GSI Suite and the data may be transferred to other software programs.

The software performs these tests by controlling a GSI audiometer connected to the PC running the software.

Indication for Use of GSI-AMTAS

GSI audiometers are intended to be used for the identification and etiology of hearing loss in patients of any age. It is intended to be used by an audiologist, ENT, hearing healthcare professional, or trained technician in a hospital, clinic, healthcare facility or other suitable quiet environment.

Intended Use of GSI-AMTAS

GSI-AMTAS is intended to be used to obtain diagnostic audiometric data through a GSI audiometer. It is intended to be used for routine clinical testing in any environment in which pure-tone audiometry and speech recognition testing is performed. Anyone who can follow the instructions used for manual audiometry may be tested by GSI-AMTAS. Patients unable to cooperate because of young age or other conditions cannot undergo pure tone audiometry and may need to have the auditory system tested by other methods.

Installation and Setup

Precautions

The following precautions will aid in the secure collection and storage of patient data:

- **Disable the “suspend USB” power option to ensure proper communication between instrument and PC.**
- To avoid unwanted data transfer from PC to the network, ensure that an appropriate virus & spyware scanner is installed, updated, and effective. Please contact a local administrator for help and guidance.
- All users should have a unique login to the PC.

Prerequisites

GSI-AMTAS PC Minimum Requirements

- CPU: 2.0 GHz, Intel i5 (dual or quad core) or better
- RAM: 4 GB
- Hard Disk: 500 GB or larger
- USB Ports: 4
- Display: 19” or larger
- Resolution: 1366 x 768 minimum
- Touch screen or mouse/trackball
- CD-ROM Drive or USB for software installation
- Network LAN Card (if connecting to database via a network)

GSI-AMTAS Supported Operating Systems

- Microsoft Windows® 10 Pro
- Microsoft Windows® 7 Professional

GSI-AMTAS Software Requirements

The following will be installed automatically with the GSI Suite installation, if they are not already present on the PC.

- Microsoft .NET Framework version 4.5.2
- Acrobat Reader 11
- Driver for the GSI audiometer

GSI-AMTAS Audiometer Requirements

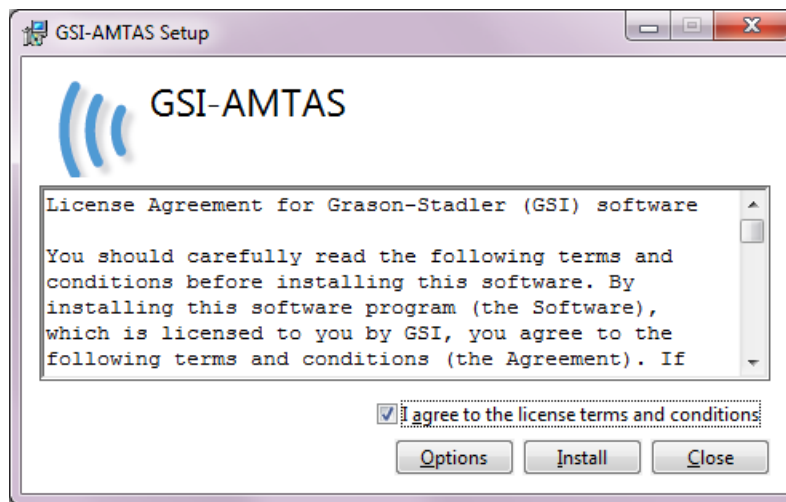
- GSI-AMTAS License
- Bone conduction Oscillator: B71, B81
- Headphones: HDA200, DD450

Installing on Windows® 7 and 10

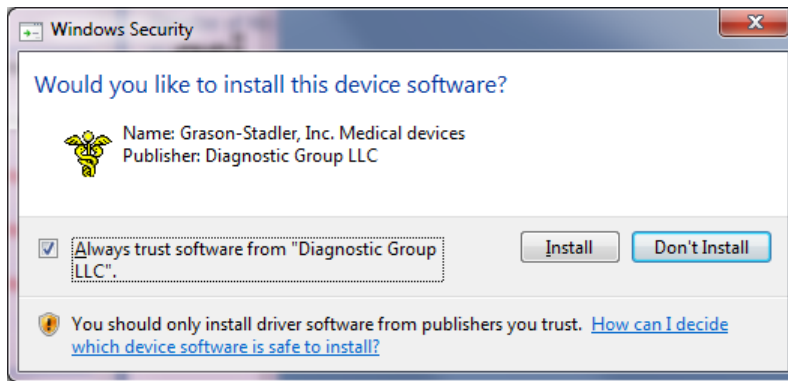
Initiating GSI-AMTAS

Insert the GSI-AMTAS CD into the CD-ROM drive. If the program is delivered on a USB drive, insert the drive into a USB port on the PC. If auto-run is disabled, browse the CD or USB drive and double click on the *Setup.exe* file.

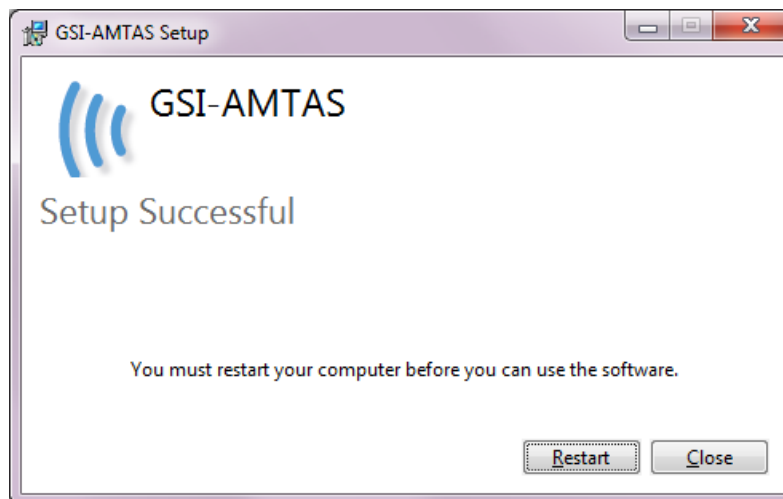
NOTE: In order to install this application, the user must either be an Administrator or know the Administrator password. The software will automatically add this user to the AMTAS administrator group. Additional AMTAS administrators may be added by running the GSI-AMTAS Config app as an administrator with this user account.



1. Read the license agreement carefully. Select the “I Agree” check box to accept the agreement and press “Install” to continue or select “Close” to avoid acceptance of the license agreement and exit Setup.
2. Windows may present a User Account Control dialog that asks if you want to allow the program to make changes to the computer. Answer “Yes” to continue the installation.
3. In order to use the GSI-AMTAS, it is necessary to have .NET and Adobe Reader installed on the computer. Before the GSI-AMTAS application is installed, the setup will evaluate the computer for these programs. If they are not currently installed, GSI-AMTAS will display a dialog box indicating that it is necessary to install these programs. Press “Install” to install the prerequisite software. This may take several minutes. Follow the on-screen instructions to complete the installation of these programs.



4. During the setup you may be presented with a Windows Security dialog. Select "Install".



5. After the device software has been installed the installation will complete and indicate that the software has been successfully installed. It is necessary to reboot the machine in order for the program to load the appropriate files as part of the boot up process. Select "Restart" to reboot the computer in order to run GSI-AMTAS. Select "Close" if you plan to restart your computer at a later time.

NOTE: Installing GSI-AMTAS will also install the GSI Instrument Service software package and any drivers needed for the audiometer. The installation may require a restart of the computer to continue.

Uninstalling GSI AMTAS

1. Open the Windows Control Panel
2. Select Programs and features
3. Select GSI-AMTAS
4. Select Remove or Uninstall
5. Follow the onscreen instructions

Connecting GSI Instruments

To configure GSI-AMTAS to a specific GSI audiometer you need to make the connection between the instrument and the PC running the GSI-AMTAS software.

GSI-AMTAS License

GSI-AMTAS requires a license on the audiometer in order for the program to connect to the audiometer. The licensing is specific to the audiometer and not the PC running the GSI-AMTAS software. Existing license information for an audiometer is found in the Configuration screen of the audiometer. A license to run GSI-AMTAS is obtained from your authorized GSI distributor.

Connecting the GSI Audiometer to the GSI-AMTAS PC

1. Use a standard A/B USB Cable.
2. Plug the hexagon connector (B plug) into the USB port on the GSI audiometer.
3. Plug the USB connector (A plug) into a USB port on the computer.
4. Connect the audio out port on the PC to the external in port (EXT A+B) on the audiometer using the supplied audio cable.
5. Power on both the audiometer and the PC.
6. Launch GSI-AMTAS.
7. GSI-AMTAS will automatically detect the audiometer.



AudioStar Pro rear panel – USB and External Input ports



Pello rear panel – USB and External Input ports

Patient Preparation

Although the GSI-AMTAS is a self-administered test, it is recommended that the transducers be placed on the patient by trained health care personnel. It is also appropriate to provide general instructions to the patient about the test and how to interact with the computer. The patient should be seated comfortably in front of the PC with the GSI-AMTAS program running.

Bone Oscillator Placement



The bone oscillator should be placed prior to the placement of the headphones. The AMBAND headband should be used to couple the bone conduction vibrator to the head in the forehead position. A Velcro dot (provided with the headband) can be attached to the back of the bone vibrator to stabilize it under the headband. Follow the AMBAND instructions and use the appropriate attachment point based on the age and head size.

Headphone Placement



- Take the headphones and pull both sides out while placing the headband on the very top middle part of the patient's head.
- Make sure that the ears are in the center part of the headphone cups.
- Ensure the headband remains in the middle of the very top of the head
- The ears should be in the center and completely surrounded by the ear cups.
- If you need to change the height of the ear cups, take the headphones completely off and adjust by using your thumb and fingers on the yoke and block. Push the yoke and block closer together to reduce the overall ear cup height. Conversely, if you need to increase the height of your headphone ear cups, pull the yoke and blocks apart.
- Once adjusted, place the headphones back on the patient's head.



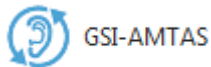
GSI-AMTAS Program

GSI-AMTAS and the GSI-AMTAS Config App are installed as part of the software installation. GSI-AMTAS is the program that the patient interacts with to obtain the audiometric data. The GSI-AMTAS Config App is used by the administrator to set the users of the GSI-AMTAS program and the parameters used for the test. The GSI-AMTAS Config App also manages the data obtained from the GSI-AMTAS program.

The GSI-AMTAS program operates in full screen, kiosk mode (no other program can be run and the desktop is not available). In order to exit the program and return the computer to the desktop, a password for the computer user is required. A password is also required to enter the configuration from the GSI-AMTAS program. GSI-AMTAS checks the credentials against Windows authentication.

NOTE: The GSI-AMTAS program runs in kiosk mode preventing most keystrokes from being recognized and preventing the user from leaving the program. However, the Ctrl+Alt+Del key combination is a special sequence that is not trapped by the program. Pressing Ctrl+Alt+Del invokes Windows Security with an interface that allows the user to lock the system, switch user, log off, change password or invoke the Windows Task Manager. The IT administrator should adjust the Window user's security to deny or allow the options accessible with this key combination.

Launching and running GSI-AMTAS

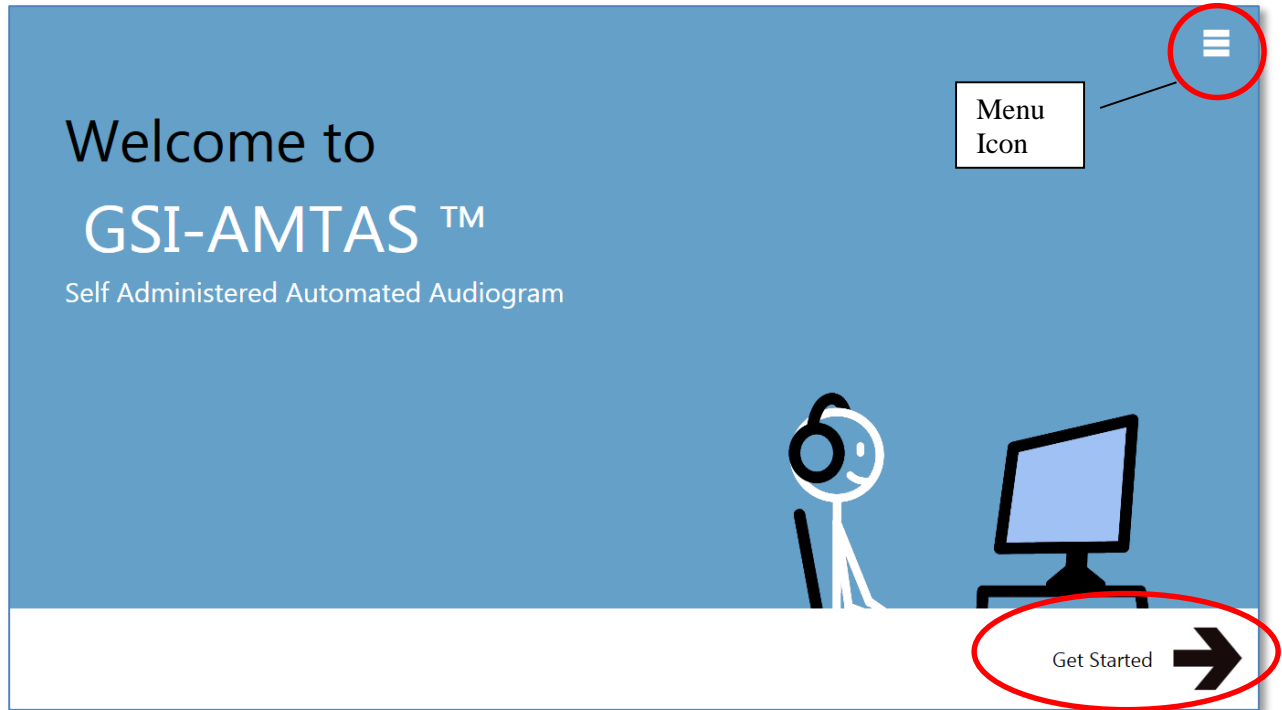


After installation of the program, a shortcut icon appears on the desktop. Double-click the desktop icon to open GSI-AMTAS. It is also possible to open this application from Start > All Programs > Grason-Stadler > GSI-AMTAS.

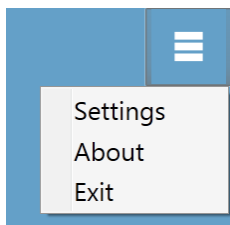
User Interface – Screen Layout and Controls

Opening Screen

Once the GSI-AMTAS is started, the program presents the Welcome screen in full screen, kiosk mode. The Welcome screen contains a menu icon in the top right of the screen and a Get Started arrow in the bottom right.



Menu



When the menu icon is selected on the opening screen, a list of 3 menu items is presented. When the Settings or Exit menu item is selected, a prompt for a password will appear. The password should be the Windows password of the user who is currently logged into the PC. This user also needs to be included in the GSI-AMTAS user security list (see Security in the GSI-AMTAS Config App). Once the password has been authenticated, the Setting menu option displays the parameters used for the GSI-AMTAS program. Once the password has been authenticated for the Exit menu option, the user is returned to the PC desktop. The About selection will display the version, copyright, patent and trademark information of the GSI-AMTAS program.

Get Started Arrow

The Get Started arrow is pressed to proceed with the GSI-AMTAS testing. The program takes the user to the next screen - the patient registration screen.

Patient Information Screen

The patient information screen provides fields for patient information. Required fields are indicated by an '*'. The required fields may be set in the configuration program or via the settings menu option. The First Name, Last Name and ID fields have a maximum character limit of 50.

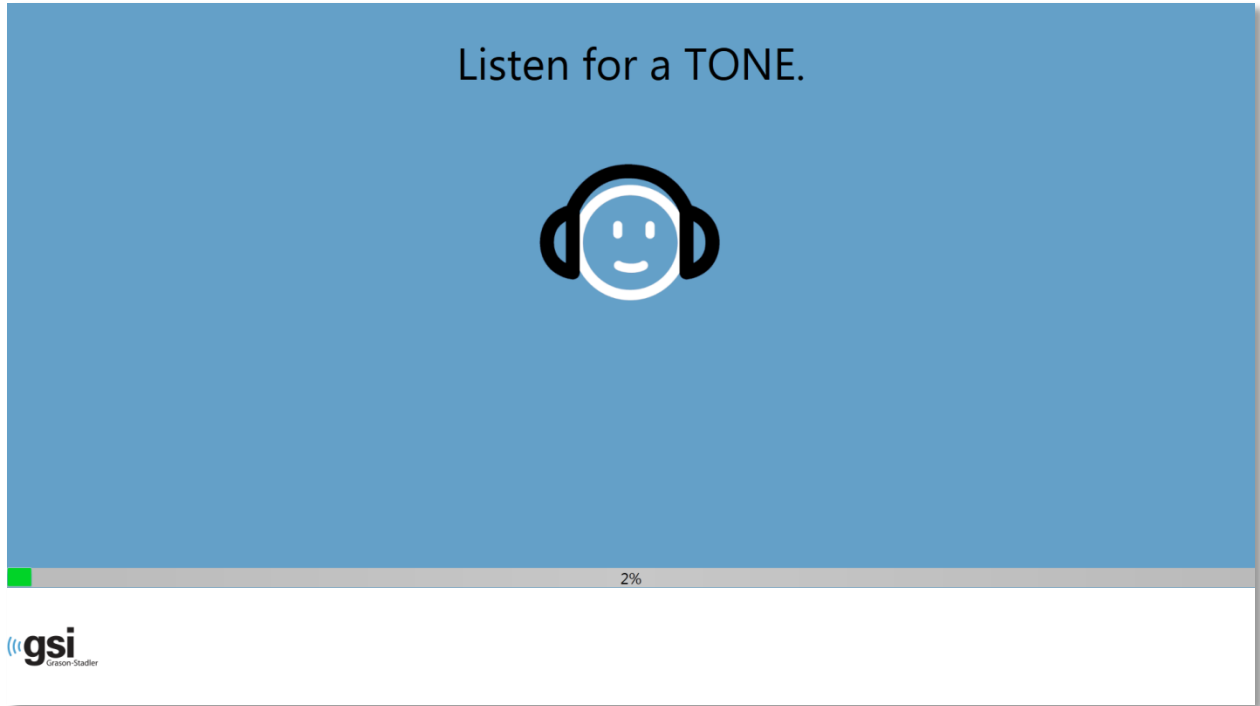
The screenshot shows a 'Register' screen with a blue background. At the top center, the word 'Register' is displayed in a large, dark font. Below it is a white form with the following fields: 'First Name' (text input), 'Last Name' (text input), 'ID' (text input with an asterisk indicating it is required), 'Gender' (radio buttons for 'Male' and 'Female'), and 'Birth Date' (a date picker showing '11/3/2015'). A large black right-pointing triangle is centered below the form. In the bottom left corner, the GSI logo is visible, consisting of the letters 'gsi' in a stylized font with 'Grazson-Stadler' written below it.

Once the required fields have been entered the arrow will change from black to green to indicate the test is ready to begin. Selecting the green arrow will move to the next screen and display the instructional video, if the instructions have been selected to play as part of the test setup (see the Setup and GSI-AMTAS Config App section of this manual for details). The test setup also determines the exams that will be performed. Available tests include any combination of air thresholds, bone thresholds, speech recognition threshold and word recognition.

NOTE: The GSI-AMTAS Config App provides an option to skip the patient information screen.

Listen for a Tone Screen

The “Listen for a TONE” screen is presented to alert the patient that they should pay attention and listen to see if they hear a tone. GSI-AMTAS uses this screen for air and bone diagnostic threshold testing as well as screening. There is a progress bar at the bottom of the screen to indicate the percentage of the test that has been completed. Masking is always presented to the non-test ear.

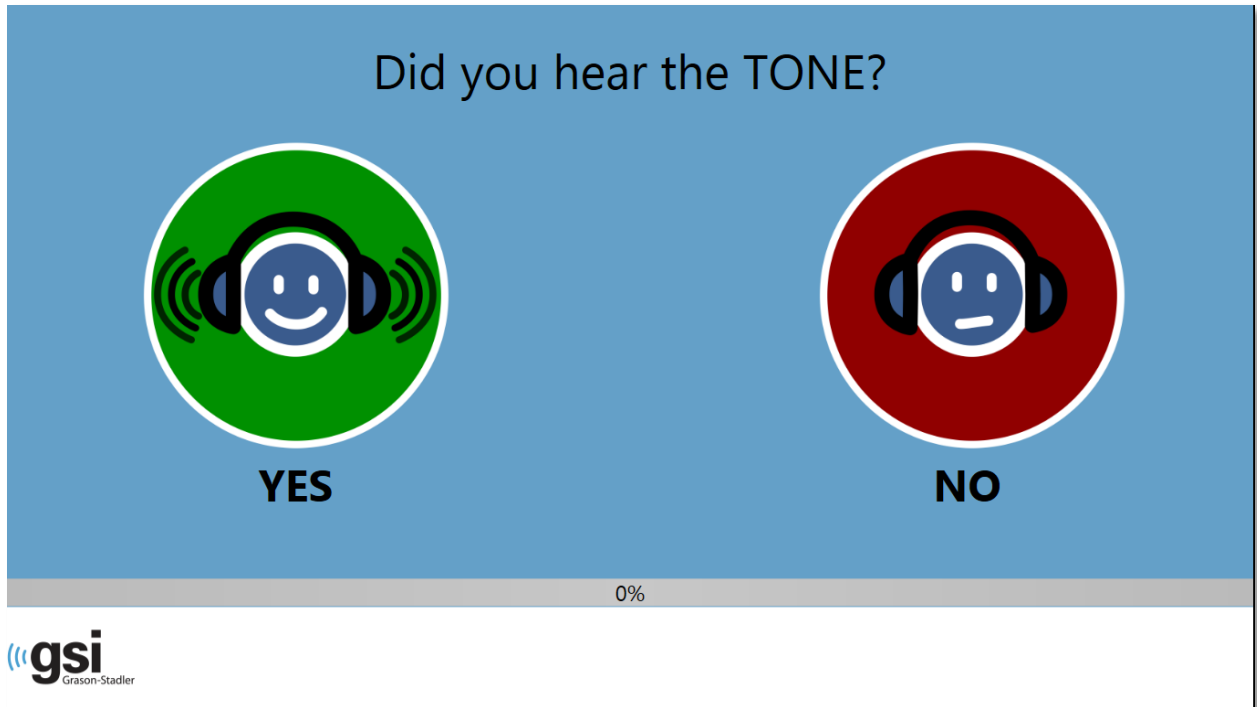


Once the tone has been presented, a new the screen is displayed to allow the patient to respond.

NOTE: Because of the psychophysical procedure that is employed by the program, there may be times in which no stimulus is presented. In addition, if the patient does respond in a timely fashion, a warning message will be presented. The fourth non-response will result in the application ending the test and proceeding to the Finish screen

Response to a Tone Screen

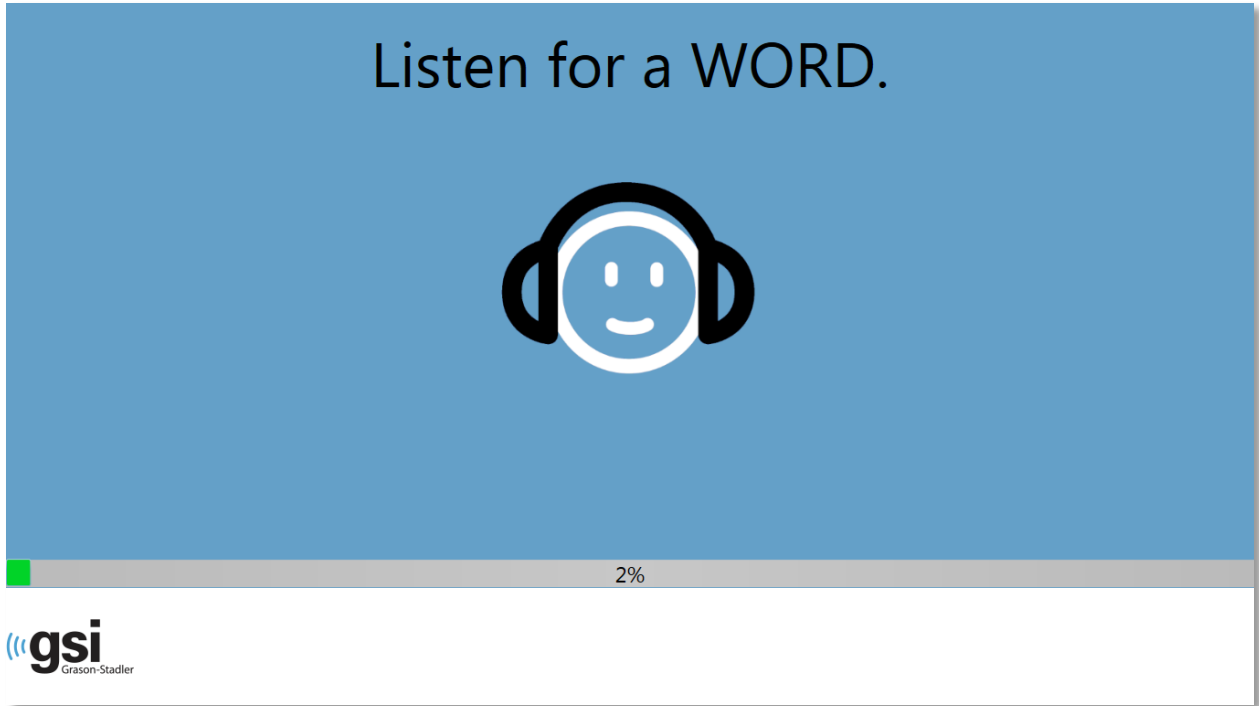
The response screen prompts the user with the question about hearing the tone and presents two icons. The patient indicates that they heard the tone by choosing the icon on the left and to indicate that they did not hear the tone by choosing the icon on the right.



The “Listen for a TONE” and “Did you hear the TONE” screens repeat to test the different levels and frequencies as needed to determine the patient’s threshold. The air conduction threshold test is followed by the bone conduction threshold test (if both tests have been selected in the settings). The screens are the same for the two tests and there is no indication to the patient that the air threshold test has completed and the bone threshold test has started.

Listen for a Word Screen

The “Listen for a WORD” screen is presented to alert the patient that they should pay attention and listen to see if they hear a word. GSI-AMTAS uses this screen for speech recognition threshold and word recognition scoring. There is a progress bar at the bottom of the screen to indicate the percentage of the test that has been completed. Masking is always presented to the non-test ear.



Once the word has been presented, a new the screen is displayed to allow the patient to respond.

Response to a Word Screen

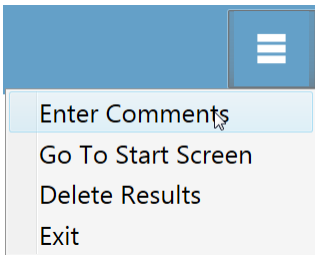
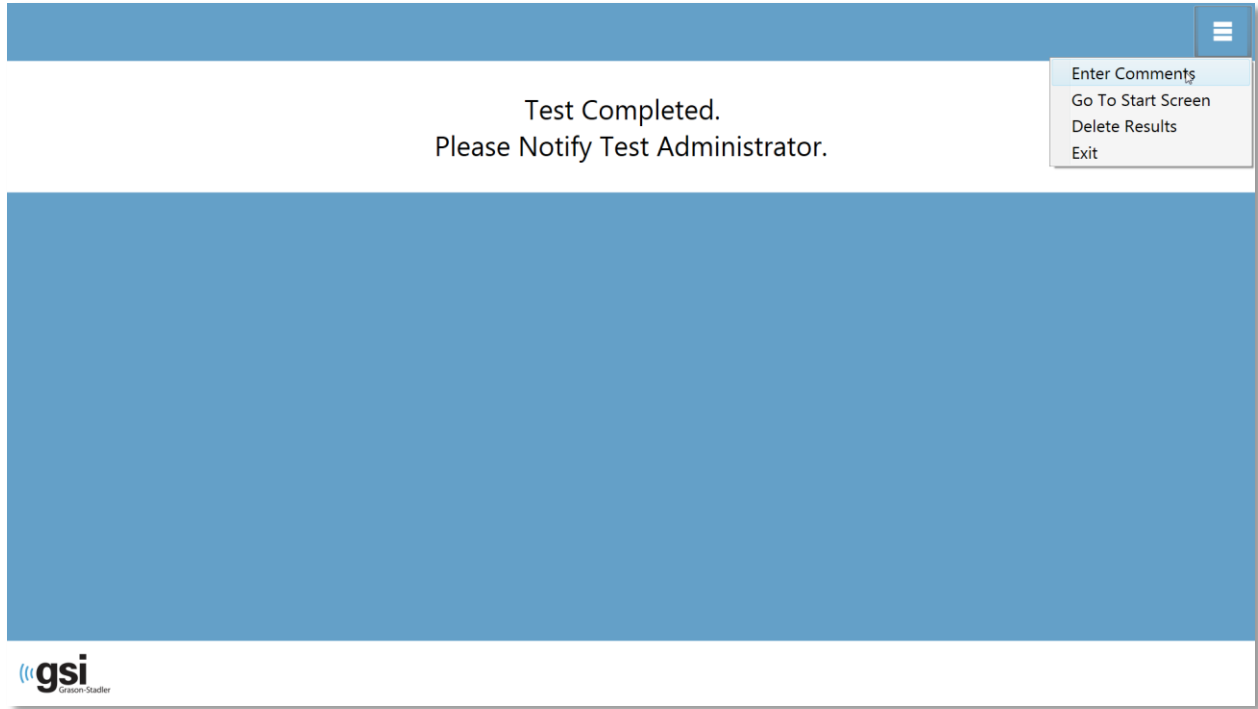
The response to a word screen prompts the user with the question about hearing the word and presents a list of four words from which to choose. The patient indicates that they heard the word by choosing the matching word.



The “Listen for a Word” and “What word did you hear?” screens repeat to test the different levels as need to determine the patient’s threshold. The speech recognition threshold test is followed by the word recognition test (if both tests have been selected in the settings). The screens are the same for the two tests and there is no indication to the patient that the speech recognition threshold test has completed and the word recognition test has started.

Test Completed Screen

When all the tests have been completed the “Test Completed” screen is presented. There is a menu at the top right of the screen. If any item in the sub menu is selected, a prompt for a password will appear. The password should be the Windows password of the user who is currently logged into the PC.



Enter Comments

The ‘Enter Comments’ sub menu item provides an option for the entry of free text. A dialog is presented for the user to enter the comments. This text is stored with the test results and printed as part of the report.

Go To Start Screen

The ‘Go To Start Screen’ returns the program to the Opening Screen ready to start the next test.

Delete Results

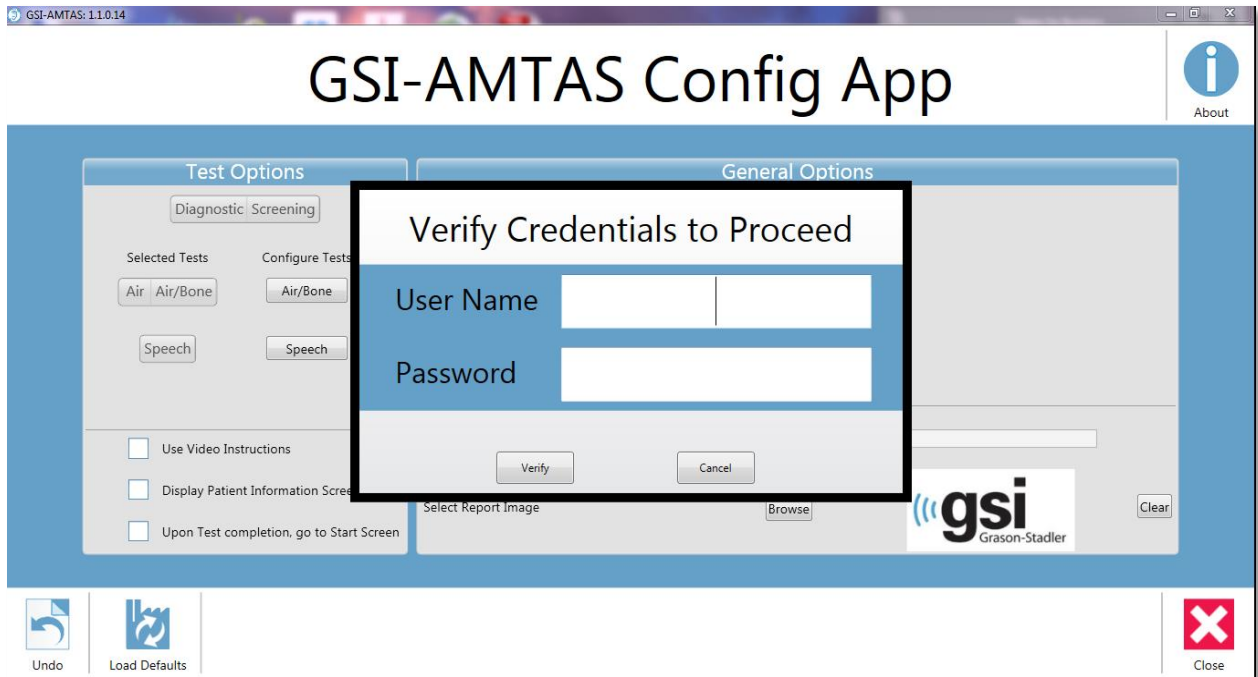
The ‘Delete Results’ option presents a confirmation dialog. Upon confirmation of the delete action, the test that was just completed is removed.

Exit

The exit option closes the program and returns the user to the PC desktop.

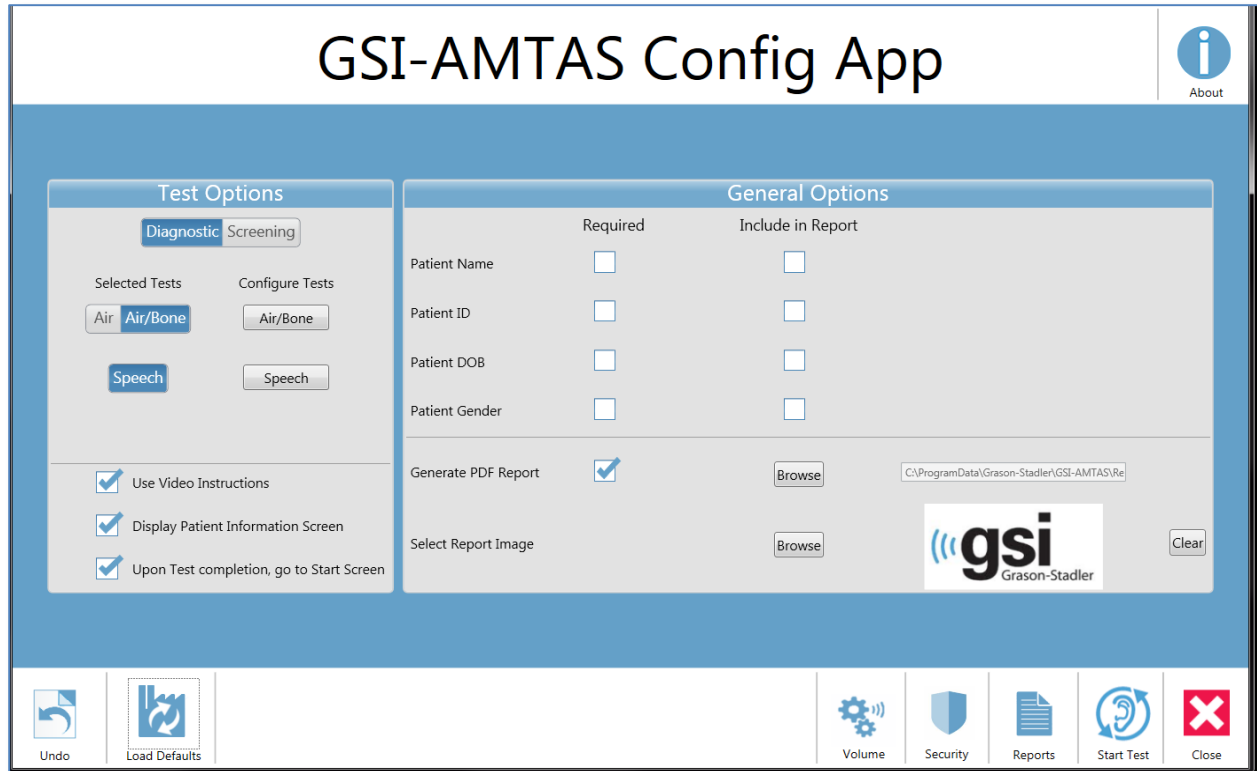
Settings and GSI-AMTAS Config App

The Settings option from the menu on the Opening Screen allows a user to set the parameters for running the GSI-AMTAS test. The Config App program has the same options as the Settings menu. Both the Settings menu option and the GSI-AMTAS Config App program require a password and confirm that user has the proper security privileges. In order to configure users, the program must be “Run as administrator” (right clicking on the desktop shortcut offers this option).



GSI-AMTAS uses Windows authentication for the user IDs and passwords. When GSI-AMTAS prompts for a password, it is the person’s Windows password that should be entered. Once the user name and password have been authenticated, the main Config App screen is presented displays the parameters used for the GSI-AMTAS program.

NOTE: There is a difference in the persistence of the changes made to the options that depends on how the Settings/GSI-AMTAS Config App is launched. When changes are made from the Settings menu in the GSI-AMTAS program, the changes are only applicable for the current test session. When changes are made from the GSI-AMTAS Config App launched from the Windows Start menu (or desktop icon) the changes are saved as the defaults setting for all future test sessions.



The main Config App screen contains two main sections and a menu bar at the bottom. The sections are for General Options used in the program and the Test Options that are specific for the tests that will be conducted. The About icon in the top right of the screen displays information regarding the software version and patent and copyright information. The About dialog has an Export Log button that will output the logs from the program to the selected location. The logs may be useful for trouble shooting should problems occur with the program.

Test Options

The Test Options section controls the type of testing that will be performed by the program.

Diagnostic/Screening Option

The Diagnostic/Screening button controls the type of pure tone testing that will be performed. The Diagnostic option is used to identify hearing threshold levels of the patient. The Screening option presents the pure tones at a fixed level (upper limits of normal hearing) and records the results as pass/fail for the frequencies that are tested. When the Screening Test option is selected, an option button to configure the screening test replaces the Selected Tests and Configure Tests options from the Diagnostic Test type. The parameters that are used for the screening testing are set in the Configure Tests, Screening option.

The screenshot shows a 'Test Options' dialog box. At the top, there are two tabs: 'Diagnostic' (which is selected and highlighted in blue) and 'Screening'. Below the tabs, there are two columns of options. The left column is labeled 'Selected Tests' and contains three buttons: 'Air', 'Air/Bone' (which is selected and highlighted in blue), and 'Speech'. The right column is labeled 'Configure Tests' and contains two buttons: 'Air/Bone' and 'Speech'. At the bottom of the dialog, there are three checkboxes, all of which are checked with a blue checkmark: 'Use Video Instructions', 'Display Patient Information Screen', and 'Upon Test completion, go to Start Screen'.

Selected Tests – Air, Air/Bone Options

The Selected Test choices for the Diagnostic test provide an option for pure tone air-only testing or both air and bone testing.

Selected Tests - Speech Option

The Speech option under the Selected Test may be turned on or off to indicate if speech testing should be performed. The type of speech testing and the parameters to use for the testing may be configured by selecting the Configure Tests, Speech button.

Use Video Instructions

The Use Video Instructions check box determines if the video instructions for the test are presented. If the box is checked, instructions describing the pure tone tests and the speech tests are presented prior to the test beginning.

Display Patient Information Screen

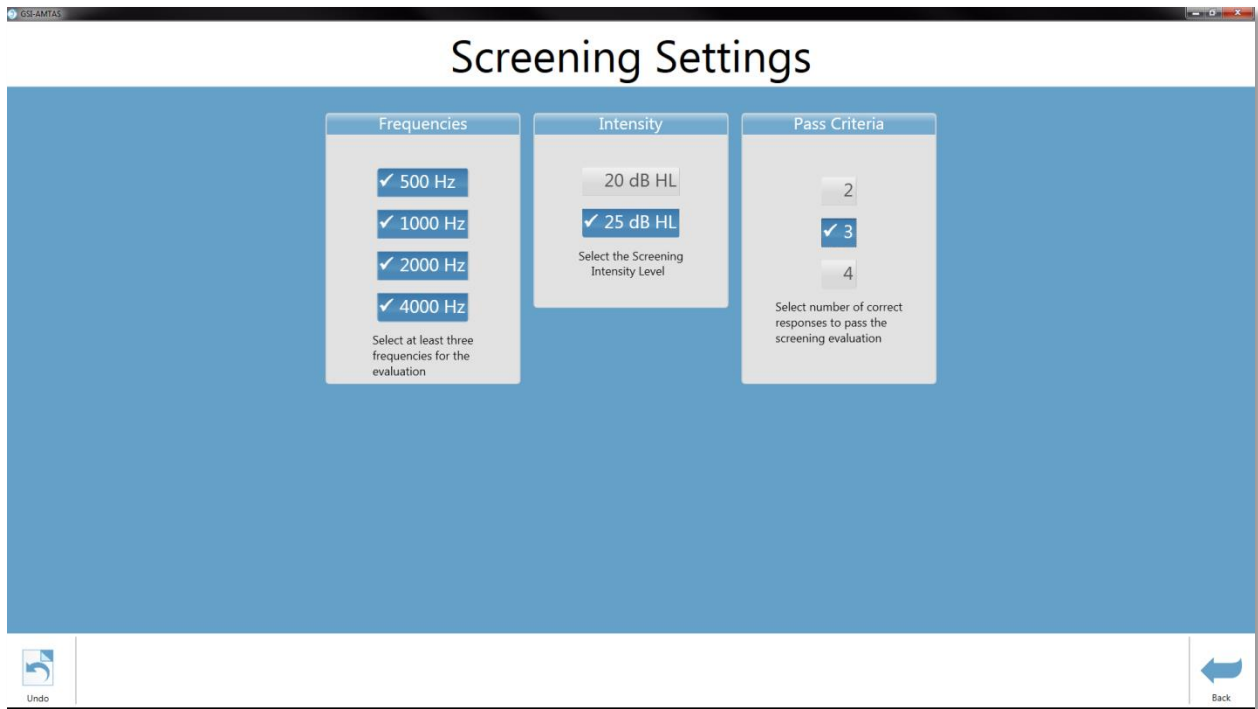
The Display Patient Information Screen check box determines if the patient demographic dialog is presented. If the box is checked, there is a dialog that prompts for the patient information. If the box is unchecked, a patient information dialog is not presented prior to the test beginning.

Upon Test completion, go to Start Screen

The Upon Test completion, go to Start Screen check box determines if upon completion of the test, the program returns to the Start screen or remains at the Finished test screen. If this option is checked, the program proceeds to the Test start screen – ready for the next patient. If this option is unchecked, the program waits at the finished Test screen. When this option is unchecked, there is a menu icon in the upper right corner with the submenu containing the options to add comments, go to the start screen or exit the program. When an option is selected from the menu, the program prompts for a password in order to proceed with the menu choice. If comments are entered, these comments are stored as part of the test results report and the program.

Configure Tests – Screening

When the Configure Screening button is selected, a new screen is presented with the options for performing the pure tone screening test.

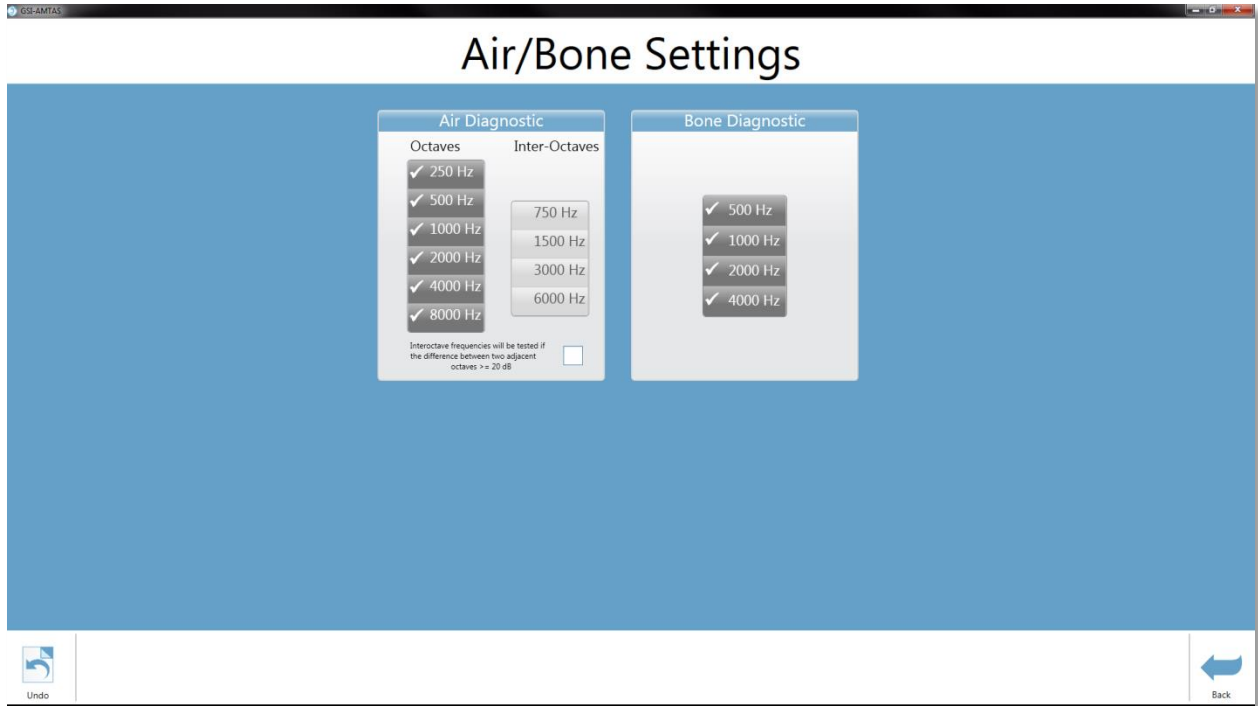


There are three sections in the screening settings that control the parameters used for the screening test. The Frequencies section controls the pure tone frequencies (500, 1000, 2000 and 4000 Hz) that are presented in the test. Three of the four frequencies are required in order to perform the test. The Intensity section determines if the output level for the test is at 20 or 25 dB HL. The Pass Criteria section determines the number of presented frequencies where a response is

required in order to pass the screening test. The menu bar at the bottom has the options to undo any changes (and retain the previous setting) or go Back to the previous screen (settings are saved).

Configure Tests – Air/Bone

When the Configure Air/Bone button is selected, a new screen is presented with the options for performing the pure tone diagnostic threshold tests.



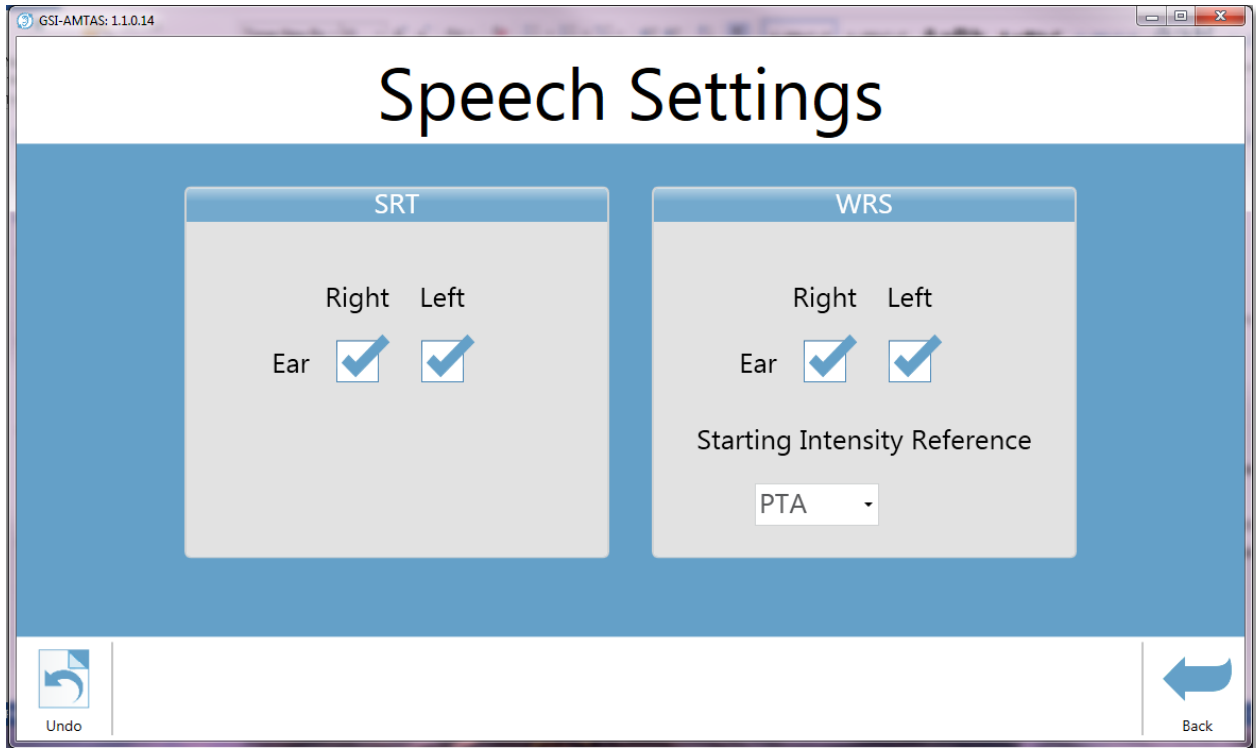
There are two sections in the air/bone settings that display the parameters used for the diagnostic pure tone threshold tests. The Air Diagnostic section shows the octave frequencies that will be tested. The octave frequencies are always tested and not configurable. The inter-octave frequencies may be configured by selecting the desired frequency – a check mark will be displayed to indicate that the frequency has been selected for testing. The check box at the bottom of the section allows the user to select when the inter-octaves are tested. When the box is checked, the selected inter-octave frequencies are only tested when the difference between the adjacent octaves are 20 dB or greater. If the box is not checked the selected inter-octave frequencies will always be tested.

The Bone Diagnostic section displays the frequencies that will be tested if the test configuration includes bone conduction testing. All four frequencies are tested and not configurable. The menu bar at the bottom has the options to undo any changes (and retain the previous settings) or go Back to the previous screen (settings are saved).

NOTE: GSI-AMTAS will only test bone conduction thresholds when the threshold for the air conduction is 10 dB HL or greater.

Configure Tests – Speech


When the Configure Speech button is selected, a new screen is presented with the options for performing the speech tests.



There are two sections in the speech settings that display the parameters used for the speech tests. The SRT section has check boxes to select the ears that will be tested for the speech recognition threshold. The WRS section also has check boxes to select the ears that will be tested for word recognition. The starting intensity may also be configured for the word recognition testing. The options for the starting intensity are the SRT (speech recognition threshold), PTA (pure tone average) and Fixed. The Fixed selection displays an additional box where the intensity in dB HL may be entered. The menu bar at the bottom has the options to undo any changes (and retain the previous settings) or go Back to the previous screen (settings are saved).

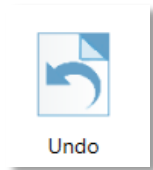
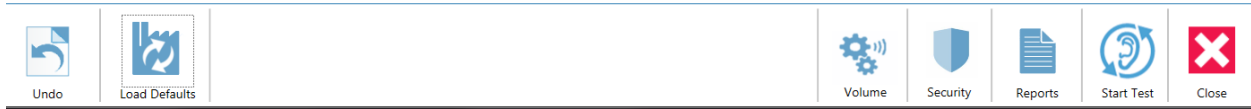
General Options

The General Options section determines the required fields for the patient information entry. This section also determines the fields that are included in the report, if and where reports are generated and stored, and provides an option to add an image (logo) to the report.

| General Options | | |
|---------------------|-------------------------------------|----------------------------------------------------------------------------------------------------------------------------------------------------------------|
| | Required | Include in Report |
| Patient Name | <input type="checkbox"/> | <input type="checkbox"/> |
| Patient ID | <input type="checkbox"/> | <input type="checkbox"/> |
| Patient DOB | <input type="checkbox"/> | <input type="checkbox"/> |
| Patient Gender | <input type="checkbox"/> | <input type="checkbox"/> |
| Generate PDF Report | <input checked="" type="checkbox"/> | <input type="button" value="Browse"/> <input type="text" value="C:\ProgramData\Grason-Stadler\GSI-AMTAS\Re"/> |
| Select Report Image | | <input type="button" value="Browse"/>  <input type="button" value="Clear"/> |

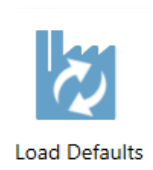
Menu Bar

The Menu Bar at the bottom of the screen provides options to save or cancel the changes that have been made in the Test Options and General Options sections. The menu bar contains an option to calibrate the output levels for the instructions that are presented to the patient, set up administrative users of the system and to view the reports.



Undo

The Undo button returns the settings on the Test Options and General Options section to the original values (when the screen was loaded). Any changes that were made are discarded and the previous configuration reloaded.



Load Defaults

The Load Defaults button returns the settings on the Test Options and General Options section to the original values (factory settings when the program was installed). Any changes that were made are discarded and the previous factory settings loaded.



Volume

The Volume icon on the menu bar presents a screen to adjust the output level of the patient instructions that may be played to the patient prior to the test. This volume is only for the output level of the instructions and does not impact the presentation of the tones and speech signals presented by the audiometer. The audiometer calibration has a separate program and should only be performed by an authorized GSI distributor. Follow the instructions presented in the dialog to adjust the level of the patient instructions.

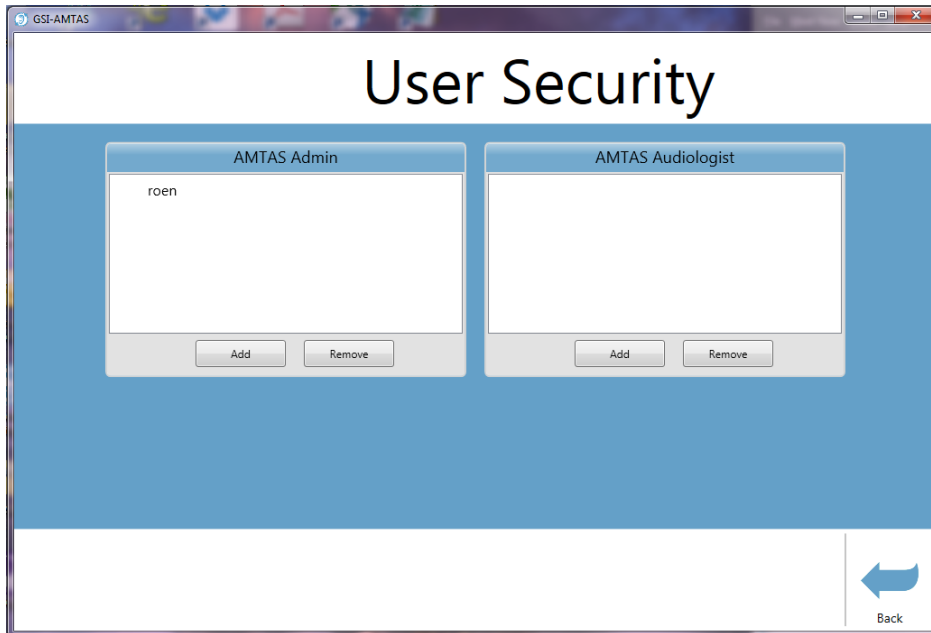


Security

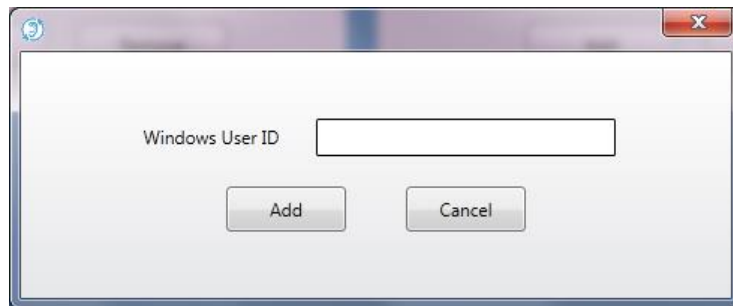
The Security icon on the menu bar allows you to configure the users of the GSI-AMTAS program. In order to configure users, the program must be "Run as administrator" (right clicking on the desktop shortcut offers this option). The security in GSI-AMTAS is based upon the security and authentication in Windows.

There are two user types in the program; Admin and Audiologist. The Admin user type has all the security privileges and is permitted to add and delete users. The Audiologist type is permitted to configure the GSI-AMTAS settings for the current test but is not allowed to add or change users. Any user that can log into the PC has privileges to run the GSI-AMTAS program.

When the Security icon is selected a new screen is displayed. The Security screen contains two sections; admin and user that correspond to the types of users defined in GSI-AMTAS.

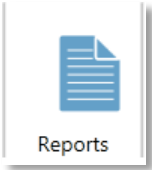


For each user type section there are buttons to add and remove users. To add a new admin or user press the add button and the add dialog is presented.



Enter the Windows User ID (this is the user name that is used to log into the PC) and press the Add button. To remove a name, highlight the name in the list and select the Remove button. A confirmation dialog is presented to confirm the removal.

NOTE: GSI-AMTAS uses Windows authentication for the user IDs and passwords. The user names entered in the GSI-AMTAS setup should be the same as those used for the computer login. When a new user is added, the program will authenticate the user and indicate a successful authentication by placing the name in the list. When GSI-AMTAS prompts for a password, it is the person's Windows password that should be entered. A user password is required.

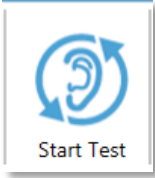


Reports

The Reports menu bar item is used to display, email or export the test reports. There are two types of reports available in the program; audiologist reports and patient reports. The reports are described in detail in the GSI-AMTAS Reports section of this manual. When the report button is selected a new screen is displayed showing the list of reports. The screen has two sections, one for the audiologist reports and the other for the patient reports. Clicking on a report in either section selects the report. Multiple reports may be selected. To view a report, press the View button at the bottom of the section. If more than one report has been selected only the first report that has a check mark will be viewed. You may also view a report by double clicking on the item in the list.

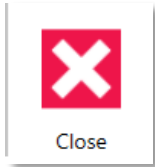


The menu bar at the bottom of the screen has buttons that are used to send the report to an email address or to export the report to another location. Sending a report by email requires that an email client is installed on the PC. When the email icon is selected, the default email client displays its send dialog where you enter the email address, subject line and any message. When the Export button is pressed, the program displays a dialog to allow the selection of a location to send the report file. The reports and the exports file are pdf formatted files. The Back button returns to the previous screen.



Start Test

The Start Test icon saves any changes that have been made in the configuration and starts the GSI-AMTAS testing. The GSI-AMTAS Config App is closed and the main GSI-AMTAS screen is presented.



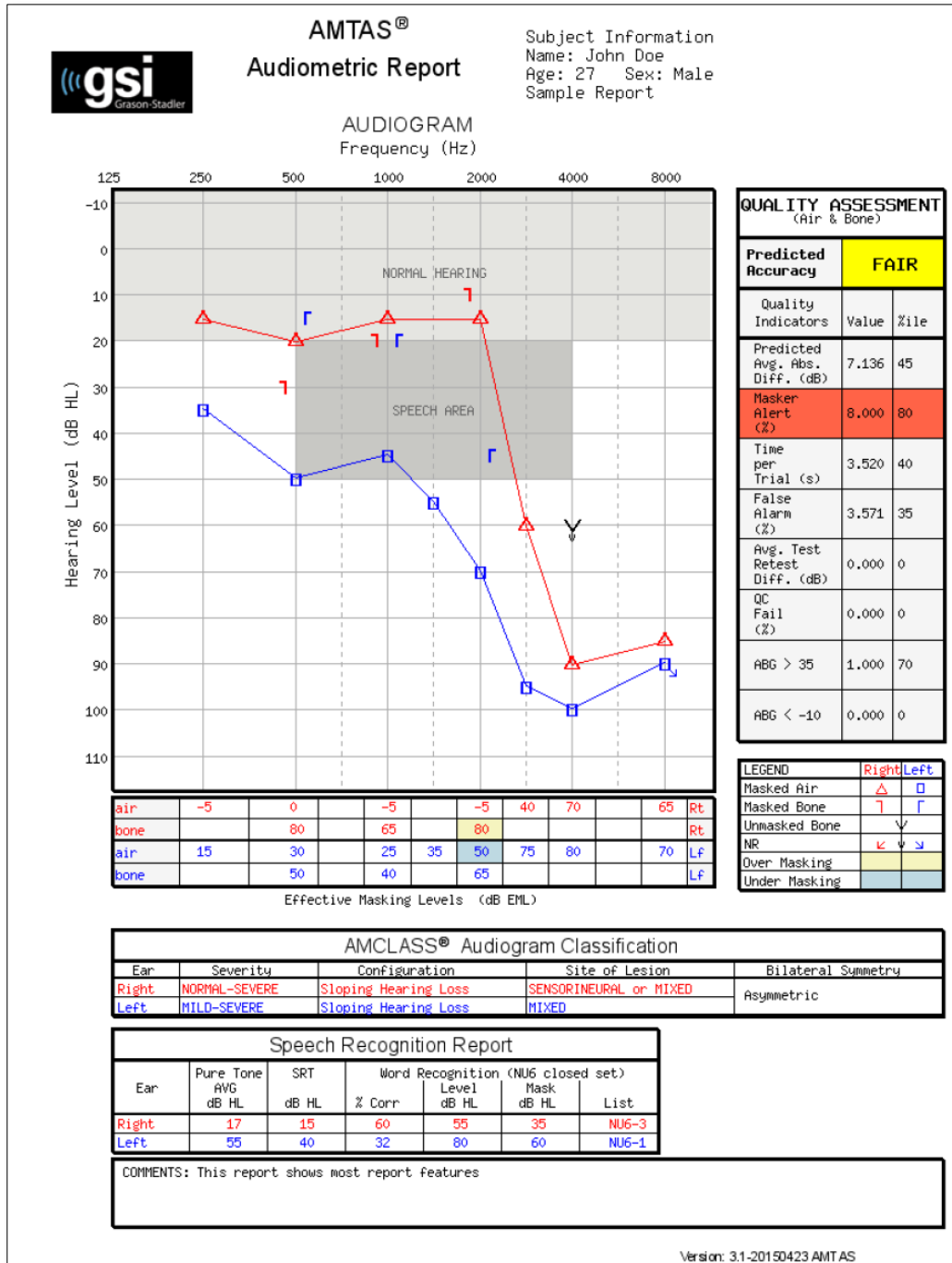
Close

The Close icon saves any changes that have been made in the configuration and closes the GSI-AMTAS Config App program.

GSI-AMTAS Reports

The GSI-AMTAS program creates two reports. The Audiologist report is designed to communicate with professionals who are knowledgeable about hearing testing and audiogram interpretation. The Patient report is designed to provide the patient with their test results in a less technical format.

Audiometric Report



The report is automatically generated at the completion of the test and is accessed from the GSI-AMTAS Config App. The report contains the following sections:

- Patient Information
- Audiogram
- Audiogram Symbol Legend
- Masking Level Table
- Quality Assessment Table
- Audiogram Classification Table
- Speech Recognition Table
- Comments

Patient Information

The patient information that is included on the report may be specified in the configuration options.

Audiogram

The audiogram displays both the air and bone thresholds for both ears. It has shaded areas to indicate the normal hearing range as well as the speech areas. A legend indicates the symbols used in the audiogram.

Masking Level Table

The masking level table displays the masking level used for each test frequency. The level may be highlighted to indicate the possibility of over or under masking. Under masking is indicated with grey shading and is a masker level at threshold that is less than the air conduction threshold of the non-test ear plus 10 dB. Over masking is indicated with yellow shading and is a masker level at threshold that is greater than the bone conduction threshold of the test ear plus air conduction interaural attenuation.

Quality Assessment Table

AMTAS incorporates eight quality indicators into the test procedure and uses them to predict test accuracy.

Predicted Accuracy

A summary that is based on the predicted average absolute difference, for assessing the accuracy of a diagnostic audiogram as Good, Fair or Poor. The category is based on a validated statistical process that is based on agreement with expert manual testers.

Predicted Average Absolute Difference

The predicted average absolute difference between automated and manually tested thresholds. The value is derived from a predictive equation from a multiple regression analysis of a set of quantitative quality indicators on a measure of test accuracy.

Masker Alert Rate

The proportion of thresholds for which the masking noise presented to the non-test ear may have been either too low or too high divided by the number of measured thresholds.

Time per Trial

The elapsed time from the onset of the stimulus to the subject's response averaged across all observation intervals.

False Alarm Rate

The number of false alarms (trials in which the subject reported the presence of a stimulus when no stimulus was presented) divided by the total number of catch trials (trials in which there was no stimulus).

Average Test-Retest Difference

The average difference between 1-kHz test and retest threshold measures obtained for the right and left ears.

Quality Check Fail Rate

The total number of occurrences of quality check fails (failure to respond to stimuli presented above threshold) divided by the number of measured thresholds.

Air-Bone Gap >35 dB

Number of air-bone gaps (difference between thresholds obtained for air and bone-conducted stimuli for each frequency/ear combination) that exceed 35 dB.

Air Bone Gap <-10 dB

Number of air-bone gaps (difference between thresholds obtained for air and bone-conducted stimuli for each frequency/ear combination) that are less than -10 dB.

Audiogram Classification Table

The air- and bone-conduction thresholds are analyzed and the audiogram is given three descriptive categories based on configuration, severity, and site of lesion. In addition, the audiogram is analyzed for interaural asymmetry.

Configuration

Describes the shape of the hearing loss with one of the following descriptors:

- Normal Hearing
- Flat Hearing Loss
- Sloping Hearing Loss
- Rising Hearing Loss
- Trough-shaped Hearing Loss
- Peaked Hearing Loss
- Other

Severity

Describes the degree of hearing loss with one or a combination of the following descriptors:

- Normal
- Mild
- Moderate
- Severe
- Profound

Site of Lesion

Describes the type of hearing loss with one or a combination of the following descriptors:

- Conductive
- Sensorineural
- Mixed

Bilateral Symmetry

Describes the interaural difference, for the hearing thresholds, as symmetric or asymmetric.

Speech Recognition Table

Results from the speech testing are displayed in the Speech Recognition table and include the following measurements.

Pure Tone AVG dB HL

The pure tone average is the average air conduction threshold at 500, 1000, and 2000 Hz for a given ear. When there is a difference of ≥ 20 dB between any two frequencies the pure tone average is the average of the better two thresholds.

SRT dB HL

Speech Recognition Threshold

Word Recognition % Corr

Percentage of correct responses for a word list

Word Recognition Level dB HL

Presentation level of the words

Word Recognition Mask dB HL

Contralateral masker level

List

Word list used (List NU1-4)

Comments

The examiner may enter comments into the report from the Comments option from the menu when the test has finished. The ability to enter comments must be enabled in the GSI-AMTAS Config App.

Patient Report

The patient report is designed to communicate with the patient. This report provides an overview of their test results along with educational material about hearing testing and audiogram interpretation.

GSI-AMTAS™ Your Hearing

AUDIOGRAM

| Frequency (Hz) | Right (dB HL) | Left (dB HL) |
|----------------|---------------|--------------|
| 125 | 10 | 70 |
| 250 | 40 | 80 |
| 500 | 40 | 70 |
| 1000 | 80 | 40 |
| 2000 | 40 | 70 |
| 4000 | 60 | 50 |
| 8000 | 50 | 10 |

The audiogram is a graph that shows what sounds you are able to hear and what sounds you can't hear. Each mark on the audiogram is the softest sound you can hear - your threshold - for a particular frequency or pitch. Normal - hearing people hear sounds that are 20 decibels (dB) or less at all the frequencies.

Hearing loss can be described by the degree of loss - how loud sounds have to be for you to hear them - and the pattern of the thresholds shown on the audiogram. The degree of loss can be mild, moderate, severe, or profound.

The speech area on the audiogram represents the sounds that make up everyday conversational speech. The location of your thresholds - above, in, or below the speech area - tells us how much of normal speech you can hear and how much you can't hear.

Hearing loss is a symptom of a problem somewhere in the ear. It can be in the outer ear, the middle ear, or the inner ear. Some of these conditions can be treated with medication or surgery. Many people with hearing loss are helped by hearing aids. It is important to find out the cause of the hearing loss so that the appropriate treatment can be provided.

Predicted Accuracy

GOOD

| LEGEND | Right | Left |
|---------------|-------|------|
| Masked Air | △ | □ |
| Masked Bone | ∩ | ∪ |
| Unmasked Bone | ∇ | ∩ |

Your Hearing Report:

Your audiogram shows that the hearing in your RIGHT ear is A SEVERE TO NORMAL, RISING HEARING LOSS.

A rising hearing loss is one where the thresholds for the low frequencies (the left side of the audiogram) are worse (lower) than the thresholds for high frequencies (on the right side of the audiogram). Your hearing for low frequencies is below the speech area so you have trouble hearing the low pitches in speech (like vowel sounds). Your hearing at high frequencies is above the speech area so you hear most of the high pitches in speech (like s, p, t, th). This probably causes difficulty understanding speech in quiet conditions and more difficulty when there is background noise, a soft speaker, or a reverberant room. A hearing aid in this ear may be very helpful for you.

Your audiogram shows that the hearing in your LEFT ear is A MILD TO MODERATE, SLOPING HEARING LOSS.

A sloping hearing loss is one where the thresholds for the low frequencies (the left side of the audiogram) are better (higher) than the thresholds for high frequencies (on the right side of the audiogram). Your hearing for low frequencies is in the speech area so you probably don't hear some of the low pitches in speech (like vowel sounds). Your hearing at high frequencies drops below the speech area so you probably have difficulty hearing some of the high pitches in speech (like s, p, t, th). This usually causes some difficulty understanding speech in quiet conditions and more difficulty when there is background noise, a soft speaker, or a reverberant room. A hearing aid for this ear may be very helpful for you.

Uploading GSI-AMTAS Results to GSI Suite

GSI-Suite versions 2.4 and above is required in order to transfer data collected using GSI-AMTAS.

1. If the application is not already running, double-click the GSI Suite icon on the desktop or select from the Windows Start menu to launch the program.
2. Select or enter the patient demographics.
 - a. If the patient has been seen before and has data in GSI Suite:
 - i. Press the Lookup icon.
 - ii. Scroll through the patient list (left column) or enter search criteria in the top field to sort the patient list.
 - iii. Select the desired patient and then press the new session icon.
 - b. For a new patient:
 - i. Press the New Patient button.
 - ii. Enter the patient information (name, date of birth, ID) if not already entered from GSI-AMTAS.
3. Select the Patient button on the front panel of the GSI audiometer. Then select Transfer Session from the menu bar. From the list of sessions select the session that you wish to transfer. Select the Close button and all data from that session will be transferred to the appropriate audiogram within GSI Suite.
4. Press the Save icon on the GSI Suite toolbar to store the audiometric data to the session.

Error Messages

Your response was not detected. You may have taken too long or did not tap on a button.

When a tone or word is presented, the program waits for a response for 10 seconds. If there is no response within 10 seconds it is considered a non-response and the error message is displayed. The patient should be reinstructed.

You did not respond within the time limit. Press the button below to conclude the test.

When a tone or word is presented, the program waits for a response for 10 seconds. If there is no response within 10 seconds it is considered a non-response. If there are 3 non-response timeouts during the test, the test is stopped with the error message. The patient should be reinstructed and the test would need to be restarted.

Domain not found. Try using a local account to complete login. Contact network administrator for Domain assistance.

GSI-AMTAS uses Windows authentication for the user IDs and passwords. The user names entered in the GSI-AMTAS setup should be the same as those used for the computer login. If the user account was setup while connected to a domain, the domain needs to be available in order to login to the program. The error message may be displayed if the network cable has been removed or wireless access turned off. If the computer for GSI-AMTAS is no longer going to be connected to the domain then a local user account should be setup by the IT administrator so that the GSI-AMTAS program can be accessed.

The username or password was incorrect.

GSI-AMTAS uses Windows authentication for the user IDs and passwords. The user names entered in the GSI-AMTAS setup should be the same as those used for the computer login. Check the state of the Caps Lock as passwords are case sensitive.

GSI-AMTAS Testing Protocol

Psychophysical Method

GSI-AMTAS was designed to provide the same test results that would be obtained by an expert audiologist with a psychophysical procedure that has advantages over the commonly used clinical (“Hughson-Westlake”) method. The psychophysical procedure is a single-interval, Yes-No, forced choice procedure with feedback. This means that there is a defined period in which the stimulus may occur (the observation) interval, after which the patient votes Yes or No. A predetermined proportion of trials are “catch trials”, observation intervals in which no stimulus is presented. A Yes response to a catch trial is a “false alarm”. When a false alarm occurs, the patient is informed and instructed to be sure to respond Yes only when there is a tone (feedback).

Masking

In routine clinical testing it is common to begin the test without masking, discover that masking is needed, and retest with masking. GSI-AMTAS avoids this inefficiency by always masking. A proprietary method is used to select the masker level based on the information that is available at the time. When the test is completed, an analysis is performed of masker levels and thresholds of both ears to determine if overmasking or undermasking may have occurred. When this occurs, the thresholds are identified with “masker alerts”. When masker alerts occur, those thresholds should be retested manually.

For pure tone air conduction testing, narrow band masking noise is presented to the non-test ear at –20 dB relative to the stimulus level in all cases. For bone conduction testing, narrow band masking noise is presented to the non-test ear at the same level as the stimulus level. For Speech testing, speech noise masking is presented to the non-test ear at –20 dB relative to the word level.

Speech

Speech Recognition Threshold (SRT) testing is obtained using a closed set of spondaic words. The Word Recognition Score (WRS) is obtained using a closed set of NU-6 words. The reference level at which the WRS testing is performed is specified in the GSI-AMTAS Config App. The reference can be based on the SRT, Pure Tone Average (PTA) or a user specified fixed level. For the SRT and PTA reference, the WRS test is presented at 22 dB above the reference. If the score is less than 88% then a second test is presented at 28 dB above the reference. No second test is given for a user specified fixed level.

Speech WRS testing will not occur if:

- SRT value > 68 dB
- PTA value > 68 dB
- Fixed value > 80 dB

Pure Tone Average Calculation

The Pure Tone Average (PTA) is calculated as the average of the threshold for 500 Hz, 1000 Hz and 2000 Hz. The PTA is not calculated if more than one of the frequencies is a No Response (NR). If a single frequency is a No Response, then the PTA is calculated from the average of the 2 frequencies with a response. If there is a difference of 20 dB or greater between any 2 of the 3 frequencies then the PTA is calculated as the average of the best 2 frequencies.

Non Responses

If the patient does respond within 10 seconds, a warning message will be presented to the patient and a timeout occurs. If three timeouts occur at any time during the pure tone testing (i.e., it does not have to be consecutive), the application will end the test and proceed to the Finish screen.

A timeout during speech test is treated as an incorrect response. For the spondee test that would result in raising the level which will eventually hit the max and abort if there are no correct responses.

Config App Default Settings

Test Options

- Diagnostic
- Selected Tests: Air/Bone, Speech
- Use Video Instructions: Yes
- Display Patient Information Screen: Yes
- Upon Test completion, go to Start Screen: Yes

General Options

- Patient Name: Not required, Not included in Report
- Patient ID: Not required, Not included in Report
- Patient DOB: Not required, Not included in Report
- Patient Gender: Not required, Not included in Report
- Generate PDF Report: Yes, Path: C:\ProgramData\Grason-Stadler\GSI-AMTAS\Reports
- Select Report Image: Not defined

Air/Bone Settings

Air Diagnostic

- Octave frequencies: All tested (not configurable)
- Inter-Octaves: Not tested
- Inter-Octave testing if ≥ 20 dB between octaves: No

Bone Diagnostic

- Octave frequencies: All tested (not configurable)

Speech Settings

SRT

- Ear: Right and Left

WRS

- Ear: Right and Left
- Starting Intensity Reference: PTA

Screening Settings

- Frequencies: 500, 1000, 2000, 4000 Hz
- Intensity: 25 dB HL
- Pass Criteria: 2

AMTAS Publications and Patents

AMTAS PUBLICATIONS

1. Margolis, R.H. Automated Audiometry – Progress or Pariah? Audiology Online (www.audiologyonline.com/articles). January 17, 2005.
2. Margolis, R.H. Automated Audiometry: Progress or Pariah. Audiology Today 17:21, 2005.
3. Margolis, R.H., Saly, G., Le, C., Laurence, J. Qualind™: A Method for Assessing the Accuracy of Automated Tests. J. Amer. Acad. Audiol., 18, 78-89, 2007.
4. Margolis, R.H., Saly, G.S. Toward a standard description of hearing loss. Int. J. Audiology 46, 746-758, 2007.
5. Margolis, R.H., Morgan, D.E. The Value of Automated Audiometry. Insights in Practice for Clinical Audiology, January 2008.
6. Margolis, R.H., Saly, G.L. Prevalence of hearing loss types in a clinical population. Ear and Hearing, 29, 524-532, 2008.
7. Margolis, R.H., Saly, G.L. Toward a standard description of hearing loss. Int. J. Audiology, 46, 746-758, 2007.
8. Margolis, R.H., Saly, G.L. Asymmetrical Hearing Loss: Definition, Validation, Prevalence. Otolology & Neurotology, 29, 422-431, 2008.
9. Margolis, R.H., Morgan D.E. Automated Pure-Tone Audiometry – An Analysis of Capacity, Need, and Benefit. Amer. J. of Audiology, 17, 109-113, 2008.
10. Margolis, R.H., Glasberg, B.R., Creeke, S., Moore, B.C.J. AMTAS – Automated Method for Testing Auditory Sensitivity: Validation Studies. Int. J. Audiology, 49, 185-194, 2010.
11. Margolis, R.H., Frisina, R., Walton, J.P. (2011). Automated method for testing auditory sensitivity: II. Air Conduction Audiograms in Children and Adults. *Int J Audiology*, 50, 434-439, 2011.
12. Margolis, R.H., Moore, B.C.J. Automated method for testing auditory sensitivity: III. Sensorineural hearing loss and air-bone gaps. *Int J Audiology*, 50, 440-447, 2011.
13. Margolis, R.H., Eikelboom, R.H., Johnson, C., Ginter, S.M., Swanepoel, D.W., Moore, B.C.J. False Air-Bone Gaps at 4 kHz in Listeners with Normal Hearing and Sensorineural Hearing Loss. *Int. J. Audiology* 52:526-532, 2013.

AMTAS PATENTS

1. Margolis, R.H. Adaptive Method and Apparatus for Testing Auditory Sensitivity. U.S. Patent # 6,496,585, December 17, 2002.
2. Margolis, R.H. Method for Assessing the Accuracy of Test Results. U.S. Patent # 7,704,216, April 27, 2010.
3. Margolis, R.H. and Saly G.S. Audiogram Classification System. U.S. Patent # 8,075,494, December 13, 2011.
4. Margolis, R.H., Saly, G.S., Birck, J. D. Calibration of Audiometric Bone Conduction Vibrators, U.S. Patent # 8,577,050, November 5, 2013.