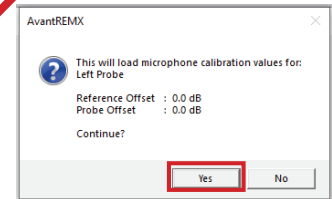
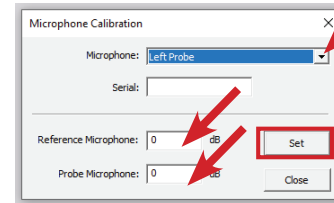
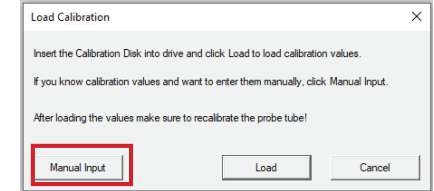
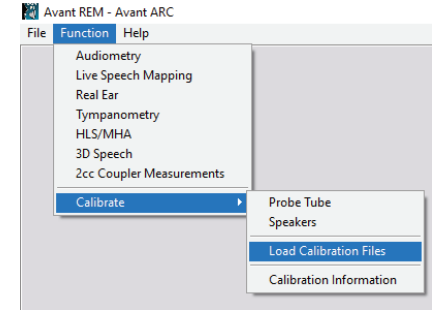


AVANT SOFTWARE Loading Calibration for the ARC or REM

The calibrated dB offsets for the probe microphone(s) must be entered into your AVANT REM Software manually before using them.

Open the AVANT REM software

- Click the FUNCTION tab, go down to CALIBRATE and over to LOAD CALIBRATION FILE.
- Click the MANUAL INPUT tab.
- Select LEFT or RIGHT probe from the drop down menu. Enter the values on the calibration sticker, attached to the probe microphone cable, into the Reference and Probe microphone dB fields. If the value is a negative figure, you must enter the minus sign (-). If the value is a decimal number, you must enter the period (.).
- Click SET. If the values displayed are correct, click the YES tab then click CLOSE to finish.



8538403 Rev.2

MedRx[®]

www.medrx-diagnostics.com

MedRx US Office: 1200 Starkey Rd. #105 Largo, FL 33771 USA • Toll Free: 888-392-1234 • 727-584-9600 • Fax: 727-584-9602

MedRx International Sales: DGS Diagnostics Sp. z o.o. Rosówek 43, 72-001 Kołbaskowo, Poland • Phone: +49 30 70 71 46 50 • Fax: +49 30 70 71 46 99

STUDIO SOFTWARE Loading Calibration for the ARC or REM

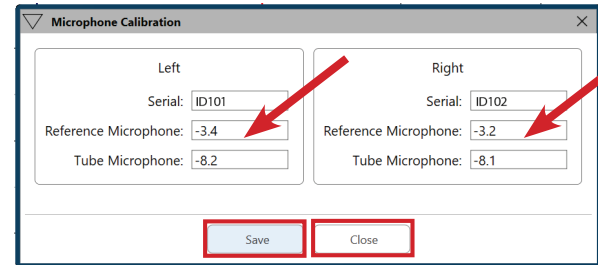
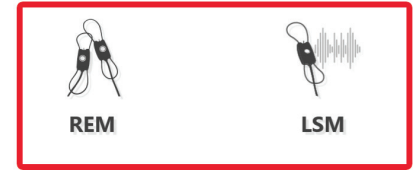
The calibrated dB offsets for the probe microphone(s) must be entered into your Studio REM Software manually before using them.

Open the Studio software

- Choose either the REM or LSM Module.
- In the top menu bar Click the More Options icon (3 dots) then click the Calibration icon (triangle).
- Enter the values on the calibration sticker, attached to the probe microphone cable, into the Reference and Tube microphone fields.

If the value is a negative figure, you must enter the minus sign (-). If the value is a decimal number, you must enter the period (.).

- Click Save then Close.



MedRx[®]

www.medrx-diagnostics.com

MedRx US Office: 1200 Starkey Rd. #105 Largo, FL 33771 USA • Toll Free: 888-392-1234 • 727-584-9600 • Fax: 727-584-9602

MedRx International Sales: DGS Diagnostics Sp. z o.o. Rosówek 43, 72-001 Kolbaskowo, Poland • Phone: +49 30 70 71 46 50 • Fax: +49 30 70 71 46 99